

W/G TURN PARTING & GROOVING

2021

This is For You!!

Eskalarso
hornigaiak · suministros

PROMOTION



Parting & Grooving Inserts Overview
Parting & Grooving Holders

Parting & Grooving Overview

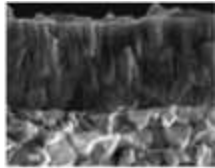
Parting & Groove Turn Grades

Parting and Grooving Grades		P Steel				M Stainless steel			K Cast iron			N Non Ferrous		S Super Alloy	
		P10	P20	P30	P40	M10	M20	M30	K10	K20	K30	N10	N20	S10	S20
PVD	YG602G (YG602)		602G				602G		602G						602G

YG602G (YG602)

P20 - P35 M20 - M40
K20 - K40 S15 - S25

PVD - TiAIN



Universal grade for Parting & Groove Turn

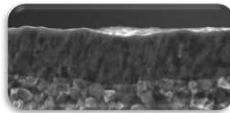
- Ultra Dense PVD Coating with optimal thermal resistance & strength
- Sub-Micron substrate designed for demanding application
- YG602G : First Choice for Low Cutting Speed, Soft and Sticky Material with Low Hardness
- YG602 : First Choice for General Application

NUEVO!!!

YG603

P35 - P45 M25 - M40

PVD - TiAIN



New Parting grade for Stainless steel

- New PVD-Coating Technology
- Ultra high toughness substrate and strong adhesion
- Excellent cutting edge strength and chipping resistance guarantee stable machinability and stable tool life for stainless steel and mild steel

Parting & Grooving CI New Parting grade for Stainless steel (YG603)

TDP



- Parting & Grooving (Positive)

TDPR

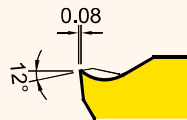


- Parting & Grooving (Positive)

TDPL



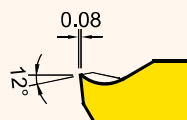
TDN*



- Parting & Grooving (General)

***NUEVO INSERTO 5mm!!!!**

TDNL



- Parting & Grooving (General)

TDNR



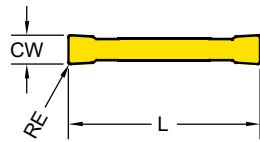
TDY



- Turning, Parting & Grooving

Parting & Grooving - Inserts

Parting & Grooving Inserts



Series	L	CW
TD* 2	20	2
TD* 3	20	3
TD* 4	20	4
TD* 5	20	5

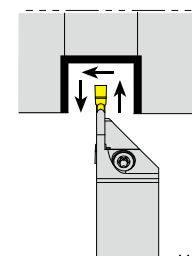
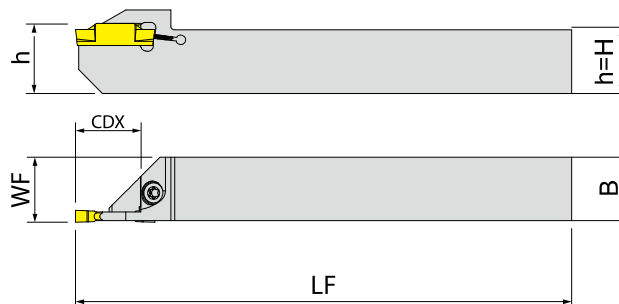
* CDX : Cutting Depth Maximum



● : Stock item ● : NEW ITEM 2021

TD.	Designation	RE	Parting & Grooving		Turning		EDP 5200..			PVP
			Fn (mm/rev.)	CDX (mm)	Fn (mm/rev.)	Ap (mm)	YG602	YG602G	YG603	
-P Parting & Grooving (Positive)	TDP2002	0.2	0.04~0.12	19			●	●	●	16.23 €
	TDP3002	0.2	0.05~0.16	19			●	●	●	16.23 €
	TDP4003	0.3	0.06~0.18	19			●	●	●	18.24 €
NUEVO!!! -P R/L Parting & Grooving (Positive)	TDPR2002	0.2	0.04~0.12	19			●			16.23 €
	TDPL2002	0.2	0.04~0.12	19			●			16.23 €
	TDPR3002	0.2	0.05~0.16	19			●			16.23 €
	TDPL3002	0.2	0.05~0.16	19			●			16.23 €
-N Parting & Grooving (General)	TDN2002	0.2	0.06~0.18	19			●	●	●	16.23 €
	TDN3002	0.2	0.07~0.22	19			●	●	●	16.23 €
	TDN4003	0.3	0.08~0.25	19			●	●	●	18.24 €
	TDN5003	0.3	0.08~0.25	19	NUEVO!!!		●			19.86 €
NUEVO!!! -N R/L Parting & Grooving (General)	TDNR2002	0.2	0.06~0.18	19			●			16.23 €
	TDNL2002	0.2	0.06~0.18	19			●			16.23 €
	TDNR3002	0.2	0.07~0.22	19			●			16.23 €
	TDNL3002	0.2	0.07~0.22	19			●			16.23 €
-Y Groove Turn	TDY3E - 0.4	0.4	0.10~0.20	19	0.10~0.38	0.50~2.20		●		16.23 €
	TDY4E - 0.4	0.4	0.15~0.26	19	0.10~0.40	0.50~2.80		●		18.24 €

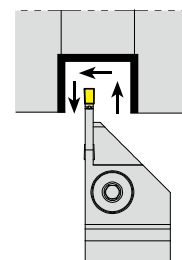
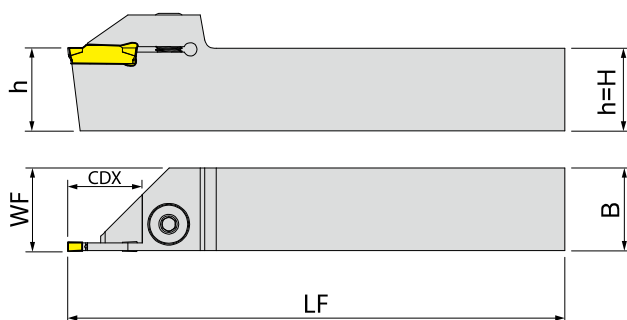
Parting & Grooving Holder - External External holders (Swiss Lathe) for TD. insert



Unit :mm

Designation	EDP 5700..		ANCHO	CDX	H	B	LF	WF	Insert	SET CON 10 INSERTOS
	R	L								
YTER/L 1212-2T12-S	0048	-	2	12	12	12	125	12.2	TD.2..	170.00 €
YTER/L 1616-2T16-S	0049	-	2	16	16	16	125	16.2		170.00 €
YTER/L 1212-3T12-S	0051	0050	3	12	12	12	125	12.3	TD.3..	170.00 €
YTER/L 1616-3T16-S	0053	0052	3	16	16	16	125	16.3		170.00 €

External holders for TD. insert

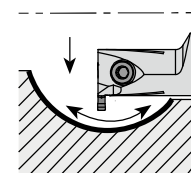
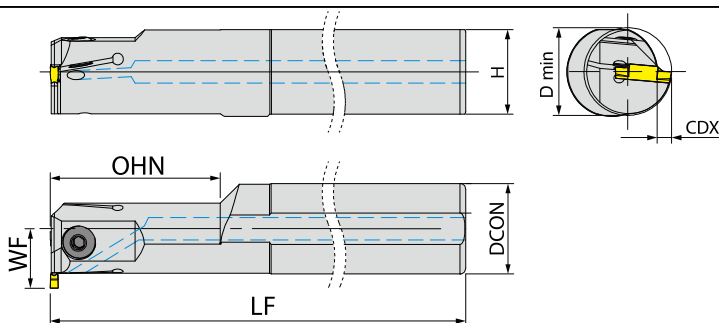


Unit :mm

Designation	EDP 5700.. R	L	ANCHO	CDX	H	B	LF	WF	Insert	SET CON 10 INSERTOS
YTER/L 2020-2T9	0028	-	2	9	20	20	125	20.3	TD.2..	170.00 €
YTER/L 2020-2T15	0030	0029	2	15	20	20	125	20.3		170.00 €
YTER/L 2020-2T20	0032	0031	2	20	20	20	125	20.3		170.00 €
YTER/L 2525-2T17	0034	0033	2	17	25	25	150	25.3		170.00 €
YTER/L 2020-3T20	0040	0039	3	20	20	20	125	20.4	TD.3..	170.00 €
YTER/L 2525-3T9	0042	0041	3	9	25	25	150	25.4		170.00 €
YTER/L 2525-3T20	0044	0043	3	20	25	25	150	25.4		170.00 €
YTER/L 2525-3T25	9044	9043	3	25	25	25	150	25.4		170.00 €
YTER/L 3232-3T20	0045	-	3	20	32	32	170	32.4	TD.4..	170.00 €
YTER/L 2525-4T20	0047	0046	4	20	25	25	150	25.5		182.00 €
YTER/L 2525-4T30	9047	9046	4	30	25	25	150	25.5		182.00 €
YTER/L 2525-5T25	9947	9946	4	25	25	25	150	25.5		198.00 €

Parting & Grooving - Holder - Internal

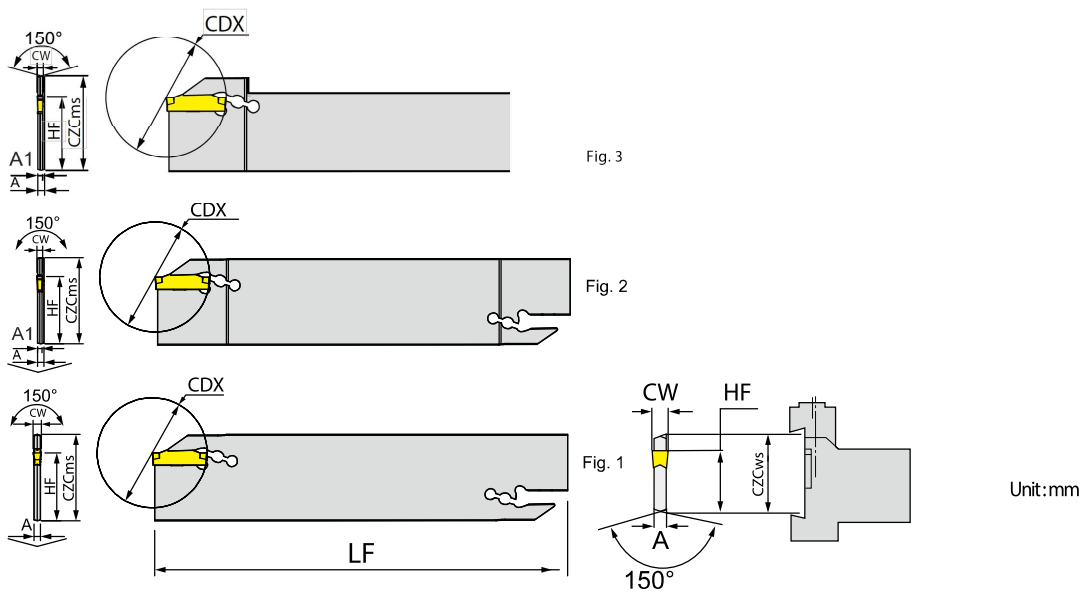
Internal holders for TD. insert



Unit :mm

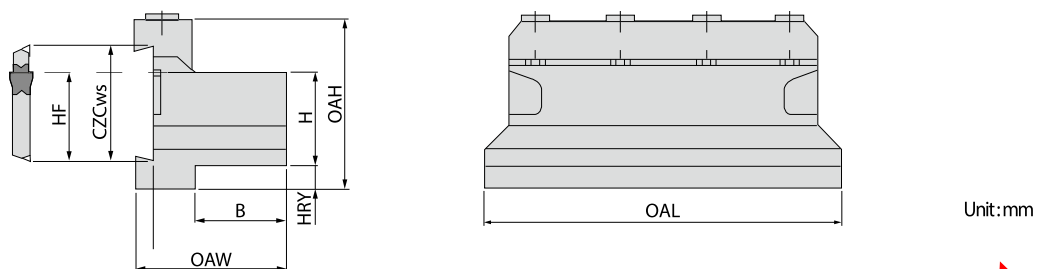
Designation	EDP 5700.. R	L	ANCHO	DMIN	CDX	DCON	H	OHN	LF	WF	Insert	SET CON 10 INSERTOS
YTIR/L 16-2C-T8.5	● 0054	-	2	25	8.5	16	14.8	28	150	16.5	TD.2..	170.00 €
YTIR/L 20-3C-T6	● 0055	-	3	25	6	20	18.3	40	170	16	TD.3..	170.00 €
YTIR/L 25-3C-T6	● 0056	-	3	25	6	25	23	40	200	18.5		185.00 €
YTIR/L 32-3C-T5	● 0057	-	3	31	5	32	30	60	250	21		198.00 €

Parting & Grooving - Holder Blade for TD. insert



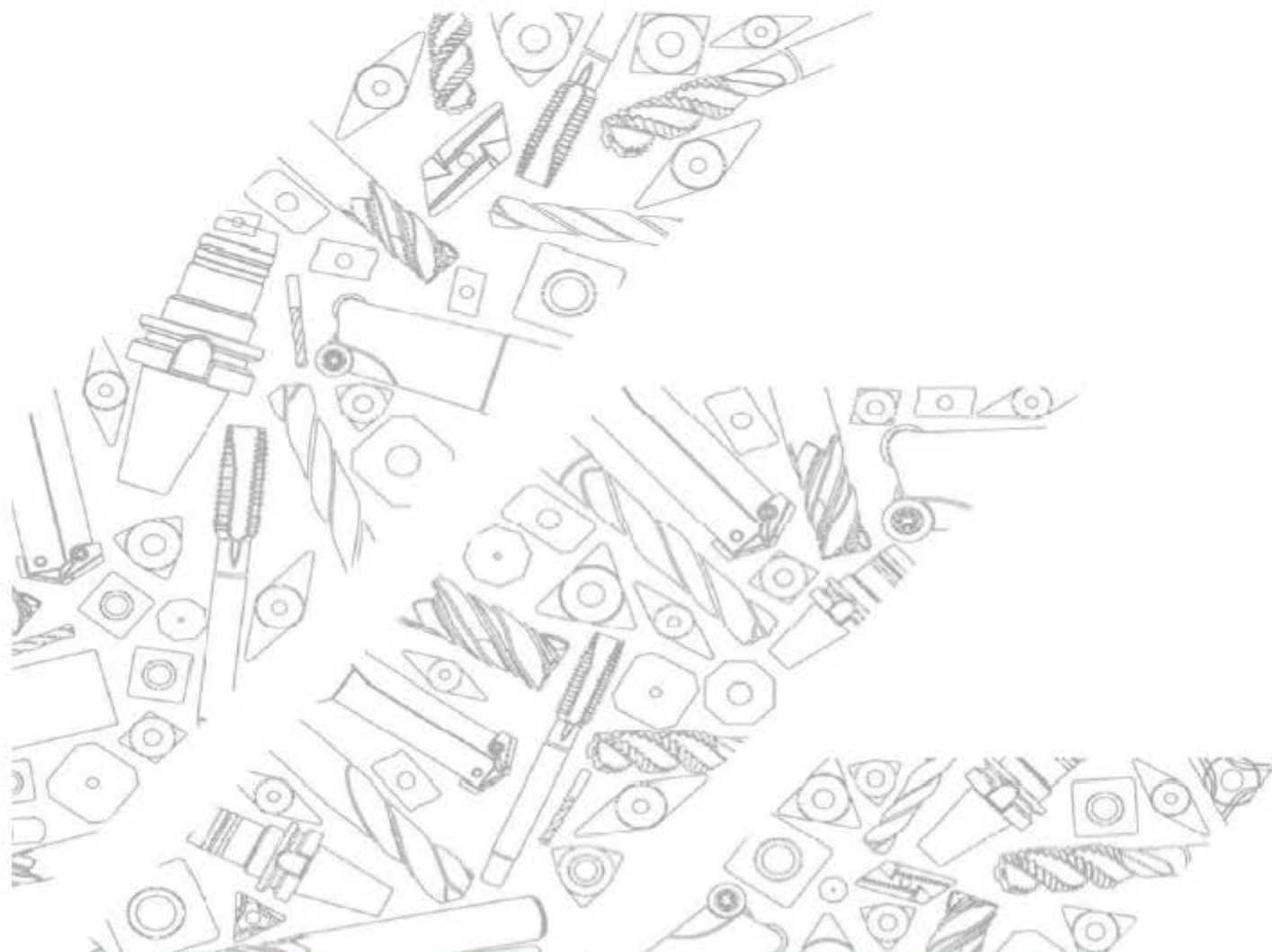
Designation	EDP 5700..	CZCms	CW	CDX	HF	LF	W	Fig.	Insert	SET CON 10 insertos
YGB 25-2	9958	25	2	20	21.4	110	2.4	3	TD.2..	155.00 €
YGB 32-2	0058	32	2	20	25	150	2.4	2		155.00 €
YGB 32-3	0059	32	3	20	25	150	2.4	1	TD.3..	155.00 €
YGB 32-4	9058	32	2	20	25	150	3.2	1	TD.4..	165.00 €
YGB 32-5	9059	32	3	20	25	150	4.2	1	TD.5..	185.00 €

Parting & Grooving - Holder Blade Block for TD. insert



Designation	EDP 5700..	CZCws	H	B	HF	HRY	OAL	OAH	OAW	AÑADE TU PORTALAMAS PORTAN SOLO
YGBU 20-25	9060	25	20	19	21.4	13	86	43	38	69.00 €
YGBU 25-25	9961	25	25	23	21.4	8	110	45	42	69.00 €
YGBU 20-32	0060	32	20	19	25	13	100	50	38	69.00 €
YGBU 25-32	0061	32	25	23	25	8	110	50	42	69.00 €
YGBU 32-32	0062	32	32	29	25	5	110	54	48	69.00 €

CONDICIONES DE CORTE



Cutting Speed			Vc (m/min.)	
ISO	VDI	Sub Group	YG602G (YG602)	
			Min.	Max.
P	1~5	Non-Alloyed Steel	90	180
	6~9	Low-Alloyed Steel	80	120
	10~11	High-Alloyed Steel	80	110
M	12~13	Ferritic & Martensitic	70	160
	14	Austenitic Stainless Steel	55	140
K	15~16	Grey Cast Iron	110	185
	17~18	Nodular Cast Iron	110	140
N	21~30	Non-Ferrous Metals (Al)	250	440
S	31~37	Superalloys & Titanium	25	45
H	38~41	Hard Materials	25	50

PROMOCION VALIDA HASTA EL 31 DE DICIEMBRE DE 2021



Laskibar bailara 9 / 11-12 pab Telf.- 943 59 18 16 / 943 59 18 66
20271 Irura (Gipuzkoa) Fax- 943 59 10 64

eskalarsa@gmail.com

www.eskalarsa.com