

///G MILL GENERAL MACHINING

2021 *This is For You!!*

Ranurado y Escuadrado

PROMOTION

Fresado Gran Avance

Face Milling Positive

Face Milling Negative

Eskalarso
herramientas y suministros

Product Overview

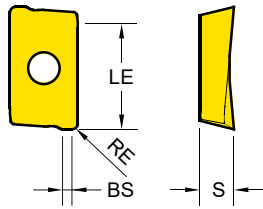
Milling Grades

Milling Grades		P Steel				M Stainless steel				K Cast iron				N Non-ferrous				S Superalloys				
		P05	P15	P25	P35	P45	M05	M15	M25	M35	K05	K15	K25	K35	N05	N15	N25	N35	S05	S15	S25	S35
PVD	YG602			602				602				602									602	
	YG622			622								622										
	YG713			713																		
	YG613				613				613													613
CVD	YG5020											5020										
Uncoated	YG50															50						

<p>YG602</p> <p>P20 - P35 M20 - M40</p> <p>K20 - K40 S15 - S25</p>	 <p>PVD - TiAlN</p>	<p>Grado universal para aplicaciones generales</p> <ul style="list-style-type: none"> • Recubrimiento PVD ultradenso con una resistencia térmica óptima • Substrato sub-micrograno diseñado para aplicaciones exigentes
<p>YG622</p> <p>P20 - P40</p> <p>K20 - K40</p>	 <p>PVD - TiAlN</p>	<p>Grado Optimizado para Aceros aleados y preendurecidos</p> <p>Excelente dureza y resistencia a la oxidación a altas velocidad</p>
<p>YG713</p> <p>P10 - P30</p>	 <p>PVD - AlTiCrN</p>	<p>Grado general para aceros</p>
<p>YG613</p> <p>P30 - P50 M30 - M40</p> <p>S30</p>	 <p>PVD - TiAlN</p>	<p>Grado tenaz para aceros inoxidable y superaleaciones</p> <ul style="list-style-type: none"> • Nueva capa de recubrimiento de alta tenacidad y lubricación sobre sustrato de grano ultrafino de alta tenacidad • Los sustratos más resistentes proporcionan un excelente rendimiento de corte en acero inoxidable
<p>YG5020</p> <p>K01-K30</p>	 <p>CVD TiCN - Al₂O₃</p>	<p>Grado CVD para fundición</p> <ul style="list-style-type: none"> • Recubrimiento CVD para una excelente resistencia al desgaste • Tenacidad mejorada para una mayor resistencia al astillamiento
<p>YG50</p> <p>N05 - N20</p>	 <p>Uncoated</p>	<p>Grado sin recubrir para aluminio</p> <ul style="list-style-type: none"> • Substrato sub-micrograno para una alta resistencia al desgaste • Calidad lapeada que evita la adhesión de material en la arista de corte

Milling - Shoulder Milling - Inserts

APKT - Shoulder Milling Positive (2 Corner)



Series	LE	IC	S
APKT 1003	9.9	6.7	3.6
APKT 1604	15.2	9.4	5.3

EDP 1200..

●: Stock item ●: New item 2021

P25	P30	P25	P40				
M30			M35				
K30	K30			K15	K15		
S20			S30	H15		N15	N15

APKT	Designation	RE (mm)	Fz (mm/tooth)	BS (mm)	YG602	YG622	YG713	YG613	YG501	YG5020	YG500	YG50	P.V.P.
PDTR General	APKT 100305 PDTR	0.5	0.15 ~ 0.24	0.86	● 0005	● 0429	● 0638						7.48 €
	APKT 100308 PDTR	0.8	0.15 ~ 0.24	0.9	● 0004	● 0430	● 0632	● 0610					7.48 €
	APKT 160404 PDTR	0.4	0.15 ~ 0.25	1.11	● 0003		● 0656						8.64 €
	APKT 160408 PDTR	0.8	0.15 ~ 0.30	1.32	● 0001		● 0633	● 0607					8.64 €
	APKT 160412 PDTR	1.2	0.15 ~ 0.32	1.13	● 0002		● 0649						8.64 €
	APKT 160416 PDTR	1.6	0.15 ~ 0.34	1.13	● 0006		● 0661						8.64 €
	APKT 160424 PDTR	2.4	0.15 ~ 0.38		● 0255		● 0653						8.64 €
-ST Aceros inoxidables Super Aleaciones	APKT 100305-ST	0.5	0.08 ~ 0.22	0.86	● 0278			● 0618					7.48 €
	APKT 160408-ST	0.8	0.08 ~ 0.25	1.32	● 0270			● 0617					8.64 €
-TR Aceros Endurecidos	APKT 160404 -TR	0.4	0.26 ~ 0.40	2.12	● 0492	● 0505							8.64 €
	APKT 160408 -TR	0.8	0.26 ~ 0.40	1.32	● 0256	● 0337	● 0637						8.64 €
	APKT 160412 -TR	1.2	0.26 ~ 0.40	2.4	● 0493	● 0523							8.64 €
	APKT 160416 -TR	1.6	0.26 ~ 0.40	2.4	● 0472	● 0524							8.64 €
	APKT 160424 -TR	2.4	0.26 ~ 0.40	1.5	● 0494	● 0520							8.64 €
-AL Aluminum	APKT 100305 -AL*	0.5	0.07~0.50	0.86							● 0235		8.64 €
	APKT 160408 -AL*	0.8	0.07~0.50	1.32							● 0236		9.96 €
-AL Aluminum	APXT 113508-AL*	0.8	0.1~1.0	1.75								● 0605	11.66 €
	APXT 160408-AL*	0.8	0.1~1.3	1.75								● 0528	13.75 €

*Consulte el precio final del set con insertos para aluminio

P	M	K	N	S	H
P	M	K			
	M			S	
P		K			
			N		

PDTR



• Primera opción para aplicaciones generales

-ST



• Para Aceros Inoxidables y Súper Aleaciones
Arista con mas filo de corte

-TR



• Para aceros endurecidos
Arista reforzada

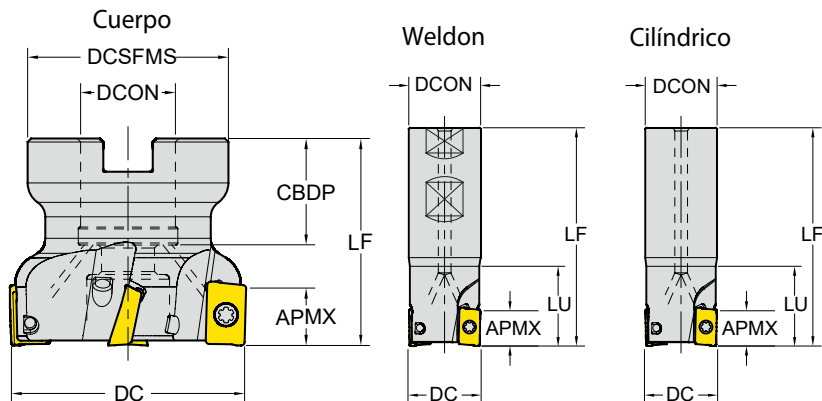
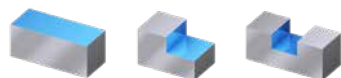
-AL



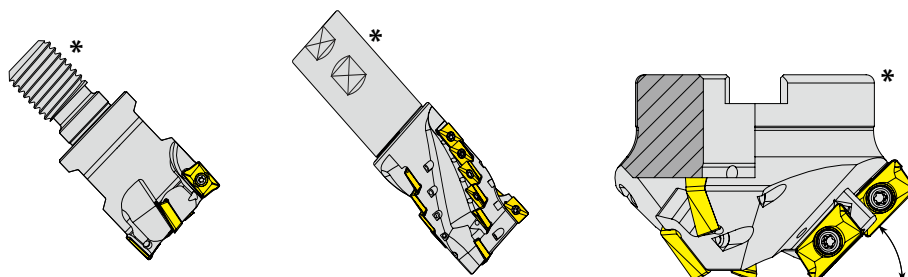
• Para Aluminio
Arista viva

Ranurado - Escuadrado Cuerpos para APKT

Ángulo de corte : 90°
Inserto de 2 puntas positivo



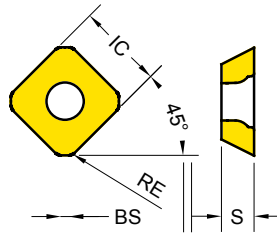
Series	Designación	EDP 1700..	DC	Z	LU	LF	DCON	CBDP	DCSFMS	PCD1		PVP SET 30 INSERTOS
APKT 1003	E90 - APKT10 - D16Z2W16 - L100	0082	16	2	-	100	16	-	-	-	●	145.00 €
	E90 - APKT10 - D16Z2C16 - L100	0083	16	2	-	100	16	-	-	-	●	145.00 €
	E90 - APKT10 - D20Z3W20 - L100	0461	20	3	30	100	20	-	-	-	●	152.00 €
	E90 - APKT10 - D20Z3C20 - L120	0085	20	3	-	120	20	-	-	-	●	152.00 €
APKT 1604	E90 - APKT16 - D25Z2W25 - L100	0562	25	2	35	100	25	-	-	-	●	170.00 €
	E90 - APKT16 - D32Z3W32 - L110	0565	32	3	40	110	32	-	-	-	●	174.00 €
	F90 - APKT16 - D50Z5S22	0095	50	5	-	40	22	20	45	-	●	185.00 €
	F90 - APKT16 - D63Z6S22	0096	63	6	-	40	22	20	50	-	●	195.00 €
	F90 - APKT16 - D80Z7S27	0097	80	7	-	50	27	23	56	-	●	210.00 €
	F90 - APKT16 - D100Z8S32	0181	100	8	-	50	32	26	65	-	●	225.00 €
F90 - APKT16 - D125Z9S40 - WOC	0238	125	9	-	63	40	32	80	-	X	275.00 €	
F90 - APKT16 - D160Z10S40 - WOC	0568	160	10	-	63	40	32	110	66.7	X	315.00 €	



***PROMOCION DISPONIBLE
PARA CUALQUIER CUERPO
APKT10/16 DE NUESTRO
PROGRAMA.
CONSULETENOS!!!**

Milling - Face Milling - Inserts
SEKT - Face Milling Positive (4 Corners)

SET PLANEAR + 30 INSERTOS !!!



Series	IC	S
SEKT 12T3	13.4	4

EDP 1200..

●: Stock item ●: New item 2021

P25

M30

K30

S20

N15

N15

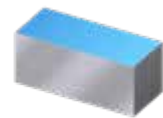
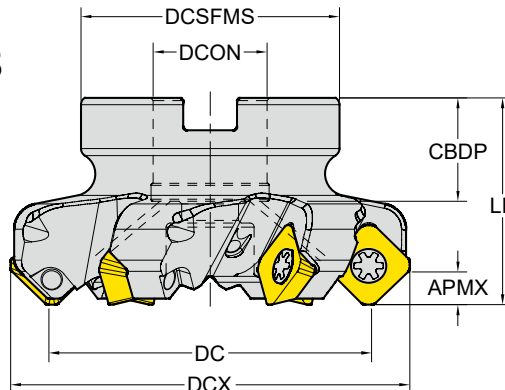
SEKT 12T3	Descripción	RE (mm)	Fz (mm/tooth)	BS (mm)	YG602	YG500	YG50	P.V.P:
Usos Generales	SEKT 12T3 AGTN	1.5	0.15 ~ 0.30	1.3	● 0056			8.91 €
Aceros inoxidables Super Aleados	SEKT 12T3-ST	1.5	0.08 ~ 0.30	1.3	● 0271			8.91 €
Aluminio	SEGT 12T3-AL*	1.5	0.10 ~ 0.35	1.94		● 0239		10.23 €
Aluminio	SEGT 12T3-AL*	1.5	0.10 ~ 0.35	1.94			● 0468	14.14 €

*Insertos para aluminio a título informativo. Consulte el precio final del set con los insertos para aluminio

Fresado / planeado

Cuerpos para SEKT12T3

Ángulo de corte : 45°
 Inserto de 4 puntas positivo



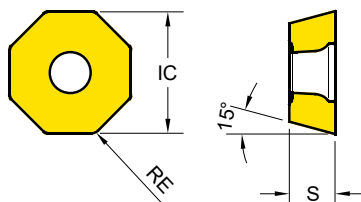
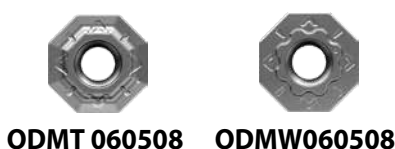
Series	APMX	Designación	EDP 1700..	DC	DCX	Z	LF	DCON	CBDP	DCSFMS	PCD1	🔹	PVP SET 30 INSERTOS
SEKT 12T3	6.0	F45 - SE12T3 - D50Z4S22	0500	50	63	4	40	22	22	48	-	●	199.00 €
		F45 - SE12T3 - D63Z5S22	0501	63	76	5	40	22	22	48	-	●	214.00 €
		F45 - SE12T3 - D80Z6S27	0502	80	93	6	50	27	25	58	-	●	228.00 €
		F45 - SE12T3 - D100Z7S32	0503	100	113	7	50	32	26	65	-	●	253.00 €
		F45 - SE12T3 - D125Z8S40 - WOC	0504	125	138	8	63	40	32	85	-	X	298.00 €
		F45 - SE12T3 - D160Z10S40 - WOC	0505	160	173	10	63	40	32	110	66.7	X	345.00 €

EJEMPLO DE PEDIDO: 30 INSERTOS 1200056 + 1 PLATO 1700501



Promoción válida hasta el 31 de diciembre de 2021 o fin de existencias

ODMT, ODMW - Face milling positive (8 Corners)



Series	IC	S
ODM*0605	15.9	5.6

EDP 1200..

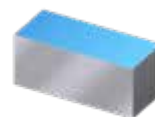
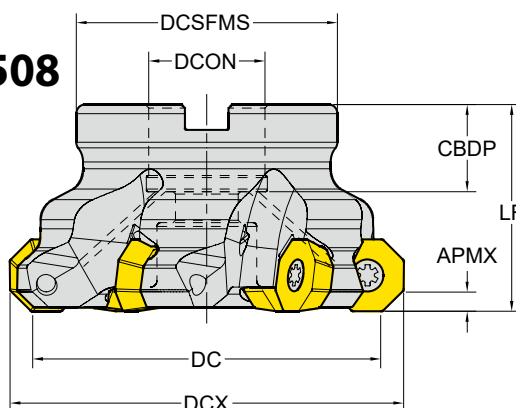
● Stock item ● New item 2021

P25	P40	P25
M30	M35	
K30		
S20	S30	

ODM*06	Descripción	RE (mm)	Fz (mm/tooth)	YG602	YG613	YG713	P.V.P:
Usos Generales	ODMT060508	0.8	0.21 ~ 0.35	● 0030	● 0	● 0659	10.73 €
Aceros duros y Fundición	ODMW060508	0.8	0.26 ~ 0.40	● 0031		● 0	10.73 €

Fresado - Planeado Cuerpos para ODM*060508

Ángulo de corte : 43°
Inserto de 8 puntas positivo



Series	APMX	Designación	EDP 1700..	DC	DCX	Z	LF	DCON	CBDP	DCSFMS	PCD1	●	PVP SET 30 INSERTOS
ODMT ODMW 0605	3.5	F43 - ODMT06 - D63Z5S22*	0001	63	73	5	40	22	20	50	-	●	335.00 €
		F43 - ODMT06 - D80Z6S27	0002	80	90	6	50	27	23	56	-	●	282.00 €
		F43 - ODMT06 - D100Z7S32	0003	100	110	7	50	32	26	78	-	●	301.00 €
		F43 - ODMT06 - D125Z8S40	0004	125	135	8	63	40	28	89	-	●	358.00 €

*Cuerpo más costoso de producir por sus menores dimensiones y aplicación más específica

EJEMPLO DE PEDIDO: 30 INSERTOS 12000030 + 1 PLATO 17000002

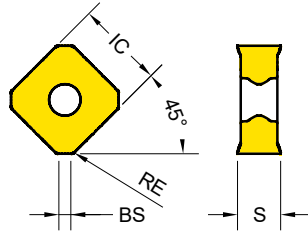
=282.00 € !!!

Promoción válida hasta el 31 de diciembre de 2021 o fin de existencias

Milling - Face Milling - Inserts

SNMX - Face Milling Positive (8 Corners)

SET PLANEAR + 30 INSERTOS !!!



Series	IC	S
SNMX 1206	12.7	6.25

EDP 1200..

●: Stock item ●: New item 2021

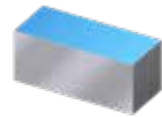
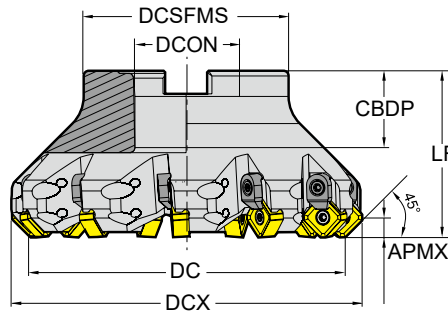
P25	P25	P40
M30		M35
K30		S30
S20		K15

SNMX1206	Descripción	RE (mm)	Fz (mm/tooth)	BS (mm)	YG602	YG713	P.V.P:	YG613	YG5020	P.V.P:
Usos General	SNMX1206ANN	0.8	0.16~0.34	1.7	● 0231	● 0658	14.41 €	● 0674	● 0460	16.01 €

Fresado - Planeado

Cuerpos para SNMX1206

Ángulo de corte : 45° Inserto de 8 puntas negativo



Series	APMX	Designación	EDP 1700..	DC	DCX	Z	LF	DCON	CBDP	DCSFMS	●	PVP SET	
												30 INSERTOS*	
												YG602	YG502
												YG713	YG613
SNMX 1206	6.0	F45 - SNMX12 - D50Z4S22	0506	50	63	4	42	22	22	42	●	270.00 €	292.00 €
		F45 - SNMX12 - D63Z6S22	0508	63	76	6	42	22	22	48	●	288.00 €	310.00 €
		F45 - SNMX12 - D80Z7S27	0510	80	93	7	52	27	25	58	●	305.00 €	325.00 €
		F45 - SNMX12 - D100Z8S32	0513	100	113	8	52	32	26	67	●	330.00 €	350.00 €
		F45 - SNMX12 - D125Z11S40 - WOC	0514	125	138	11	65	40	32	80	X	390.00 €	412.00 €
		F45 - SNMX12 - D160Z12S40 - WOC	0515	160	173	12	65	40	32	110	X	435.00 €	458.00 €
		F45 - SNMX12 - D200Z14S60 - WOC	0516	200	213	14	65	60	40	130	X	615.00 €	635.00 €

EJEMPLO DE PEDIDO: 30 INSERTOS 12000231+ 1 PLATO 17000508

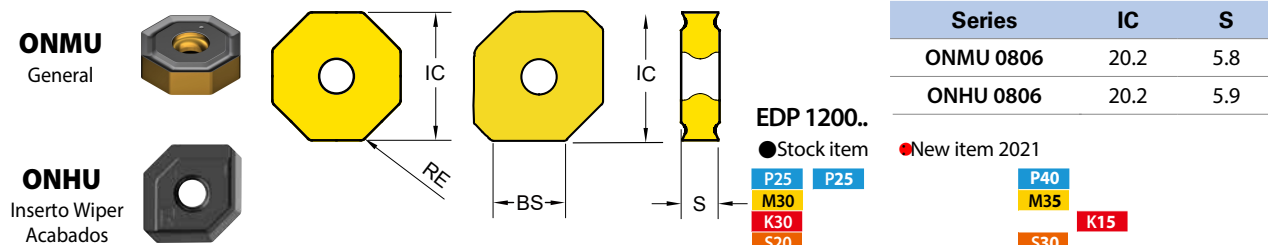


Promoción valida hasta el 31 de diciembre de 2021 o fin de existencias

Milling - Face Milling - Inserts

SET PLANEAR + 30 INSERTOS !!!

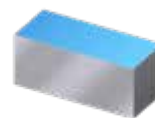
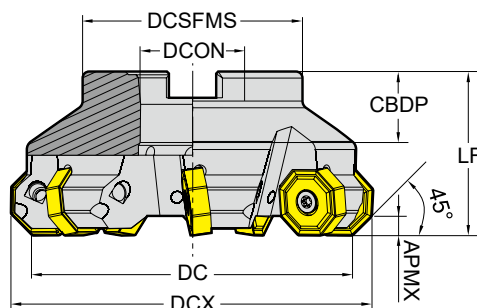
ONMU, ONHU - Face milling negative (16 Corners)



ON*U0806 Descripción		RE (mm)	Fz (mm/tooth)	BS (mm)	YG602	YG713	P.V.P:	YG613	YG5020	P.V.P:
Uso General	ONMU080608	0.8	0.22 ~ 0.50		● 0233	● 0657	17.27 €	● 0670	● 0414	19.14 €
Uso General	ONMU080612	1.2	0.22 ~ 0.50				17.27 €	● 0615	● 0542	19.14 €
Uso General	ONMU080612-S	1.2	0.22 ~ 0.50					● 0541		19.14 €
Uso General	ONMU080612-L	1.2	0.22 ~ 0.50					● 0543		19.14 €
Inserto Wiper Acabados	ONHU080612*	1.2	0.22 ~ 0.50	10.6				● 0482		24.92 €

Fresado - Planeado Cuerpos para ODM*06

Ángulo de corte : 45°
Inserto de 16 puntas negativo



Series	APMX	Designación	EDP 1700..	DC	DCX	Z	LF	DCON	CBDP	DCSFMS	PCD1	●	PVP SET 30 INSERTOS*	
													YG602	YG5020
ONMU 0806	5.5	F45 - ONMU08 - D63Z5S22	0493	63	75	5	40	22	22	49	-	●	335.00 €	358.00 €
		F45 - ONMU08 - D80Z6S27	0494	80	92	6	50	27	25	58	-	●	350.00 €	372.00 €
		F45 - ONMU08 - D100Z7S32	0495	100	112	7	50	32	26	67	-	●	365.00 €	390.00 €
		F45 - ONMU08 - D125Z8S40 - WOC	0496	125	137	8	63	40	32	87	-	X	399.00 €	425.00 €
		F45 - ONMU08 - D160Z10S40 - WOC	0497	160	172	10	63	40	32	107	66.7	X	465.00 €	485.00 €
		F45 - ONMU08 - D200Z12S60 - WOC	0498	200	212	12	63	60	40	130	101.6	X	605.00 €	630.00 €
		F45 - ONMU08 - D315Z16S60 - WOC	0499	315	327	16	63	60	40	220	101.6	X	895.00 €	920.00 €

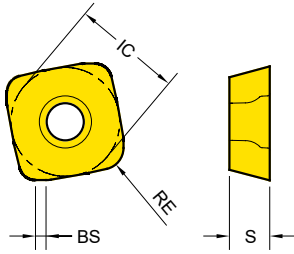
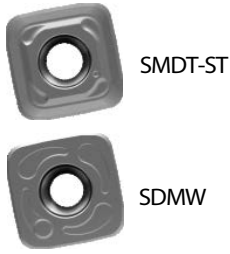
*plaquita rascadora ONHU a título informativo se vende aparte del set

EJEMPLO DE PEDIDO: 30 INSERTOS 12000233 + 1 PLATO 17000494 = 350.00 € !!!

Promoción válida hasta el 31 de diciembre de 2021 o fin de existencias

Milling - High Feed Milling - Inserts **SET GRAN AVANCE + 30 INSERTOS !!!**

SDMT / W - High Feed Positive (4 Corners)



Series	IC	S
SDM* 1204	12.7	4.7

EDP 1200..

●: Stock item ●: New item 2021

P25	P40
M30	M35
K30	S30
S20	

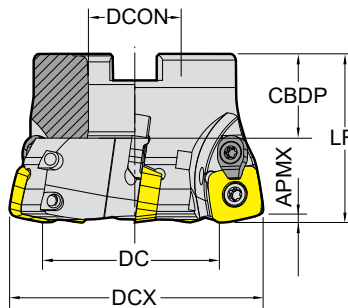
P30	P25
K30	

SDM*12	Descripción	RE (mm)	Fz (mm/tooth)	YG602	YG713	P.V.P:	YG613	YG622	P.V.P:
Uso General / INOX	SDMT120420-ST	0.8	0.21 ~ 0.35	● 0274	● 0634	12.49 €	● 0666		13.86 €
Aceros duros y Fundición	SDMW120420	0.8	0.26 ~ 0.40	● 0273		12.49 €		● 0341	13.86 €

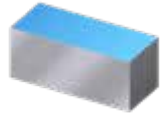
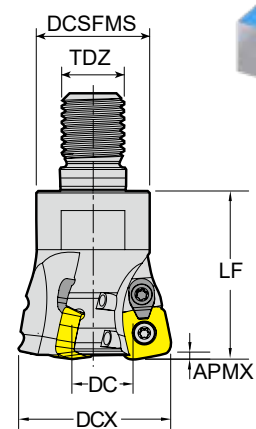
Fresado - Gran avance

Cuerpos para SDMT, SDMW <S> Shell Mill

3° Yg'a Vw' Ua'fW 10°
; eV'fa Vw&bg' fSebaef[f]ha

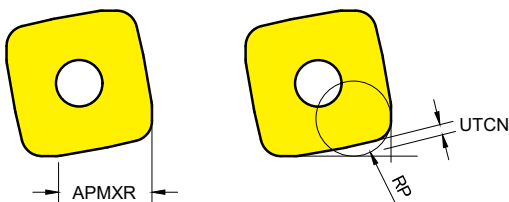


<M> Modular



Series	APMX	Designation	EDP 1700..	DC	DCX	ZEP	LF	TYPE	DCON /TDZ	CDBP /CBP	30 INSERTOS*		
											YG602 / YG713	YG622 / YG613	P.V.P
SDMT SDMW 1204	1.8	FHF - SDMW12 - D50Z4S22	0604	32.4	50	4	40	Shellmill	22	22	262.00 €	280.00 €	
		FHF - SDMW12 - D63Z5S22	0605	45.4	63	5	40		22	22	280.00 €	298.00 €	
		FHF - SDMW12 - D80Z6S27	0606	62.4	80	6	50		27	25	322.00 €	342.00 €	
		FHF - SDMW12 - D100Z8S32	0607	82.4	100	8	50		32	26	355.00 €	375.00 €	
		MHF - SDMW12 - D32Z2M16	0608	14.4	32	2	43	Modular	M16	-	262.00 €	280.00 €	
		MHF - SDMW12 - D40Z3M16	0609	22.4	40	3	43		M16	-	280.00 €	298.00 €	

Información técnica:



APMXR Radial AP Max	RP Programmed Corner R	UTCN Uncut Thickness
8.6	R3.5	0.94




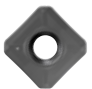









Promoción válida hasta el 31 de diciembre de 2021 o fin de existencias

Milling - Face Milling & round Inserts INSERTS LIST

●: Stock item ●: New item 2021

P25	P30	P20	P40		
M30			M35		
K30	K30			N15	K15
S20			S30		

EDP 1200..

		Designation	RE (mm)	Fz (mm/tooth)	BS (mm)	YG602	YG622	YG713	YG603	YG50	YG5020	P.V.P.
OFER General		OFER 070405	0.5	0.22 ~ 0.50		● 0209						14.08 €
		OFMT General		OFMT 05T308	0.8	0.15 ~ 0.25	● 0032					
SEKT General		SEKT 1204 AFTN		1.1	0.20 ~ 0.35	1.18	● 0055	● 0416				
		SEKT 1204 - ST	1.1	0.08 ~ 0.30	1.18	● 0257						8.91 €
		SEGT 1204 -AL	1.1	0.1~0.35	2.01					● 0467		14.14 €
SEMT General		SEMT 1204 AFTN	1.2	0.26 ~ 0.4	1.24	● 0052						8.91 €
		SEMT 13T3 AGSN	1.5	0.15 ~ 0.3	1.31	● 0203						8.91 €
SEKR General		SEKR 1203 AFTN	0.4	0.14 ~ 0.30	1.4	● 0051						8.91 €
		SEKR 1203 AFTN -PW	0.4	0.14 ~ 0.30	1.4	● 0296						8.91 €
SEKN Hard Materials		SEKN 1203 AFTN	0.4	0.22 ~ 0.35	1.4	● 0054						9.19 €
		SEKN 1203 AFTN -PW	0.4	0.22 ~ 0.35	1.4	● 0297						9.19 €
		SEKN 1203 AFTN -GW	0.4	0.23 ~ 0.35	2	● 0304						11.06 €
SPKR General		SPKR 1203 EDTR	0.8	0.15 ~ 0.35	1.4	● 0050						9.19 €
		SPKR 1203 EDTR -PW	0.8	0.15 ~ 0.35	1.4	● 0298						9.19 €
SPKN Hard Materials		SPKN 1203 EDTR	0.8	0.16 ~ 0.34	1.4	● 0048						8.91 €
		SPKN 1203 EDTR - PW	0.8	0.20 ~ 0.35	1.4	● 0279						8.91 €
		SPKN 1203 EDTR - GW	0.6	0.15 ~ 0.28	1.51	● 0280						10.73 €
SPMT General		SPMT 120408	0.8	0.15 ~ 0.3		● 0223						9.52 €
SPUN General		SPUN 120308	0.8			● 0224						9.19 €
RDKT General		RDKT 0802M0		0.15 ~ 0.25		● 0035						6.60 €
		RDKT 10T3M0		0.15 ~ 0.28		● 0041						6.88 €
		RDKT 1204M0		0.20 ~ 0.30		● 0034		● 0635				7.76 €
		RDKT 1604M0		0.20 ~ 0.35		● 0539						CONSULTAR
RDKT-ST Stainless Steel Super Alloy		RDKT 0802M0 - ST		0.08 ~ 0.25		● 0292						6.60 €
		RDKT 10T3M0 - ST		0.08 ~ 0.28		● 0293						6.88 €
		RDKT 1204M0 - ST		0.10 ~ 0.30		● 0294						7.76 €
RDKT-TR Hardened Steel		RDKT 0802M0 - TR		0.18 ~ 0.35		● 0284	● 0339					6.60/7.37 €
		RDKT 10T3M0 - TR		0.22 ~ 0.40		● 0285	● 0338					6.88/7.70 €
		RDKT 1204M0 - TR		0.22 ~ 0.40		● 0272	● 0340					7.76/8.64 €

CONSULTE NUESTRO CATÁLOGO ON-LINE PARA MAS INSERTOS!!!

P25	P30	P20	P40		
M30			M35		
K30	K30			K15	K15
S20			S30	H15	

EDP 1200..

Milling - Square 90° inserts & round inserts

INSERTS LIST

	Designation	RE (mm)	Fz (mm/tooth)	BS (mm)	YG602	YG622	YG713	YG603	YG501	YG5020	P.V.P.	
ADKT General		ADKT 150508 PDTR	0.8	0.16 ~ 0.30	1.87	● 0220					8.64 €	
		AOMT 123604 PDTR	0.4	0.08 ~ 0.22	1.07	● 0217					8.64 €	
AOMT General		AOMT 123608 PDTR	0.8	0.08 ~ 0.24	0.91	● 0218					8.64 €	
		APMT 113504 PDTR	0.4	0.15 ~ 0.22	1.26	● 0009	● 0400					6.60 €/7.37
APMT General		APMT 113508 PDTR	0.8	0.15 ~ 0.25	1.07	● 0010					6.60 €	
		APMT 160408 PDTR	0.8	0.16 ~ 0.30	1.11	● 0008	● 0399	● 0423	● 0465	● 0464		7.76 €
		TPKR 1603 PDTR		0.15 ~ 0.28	1.2	● 0060						7.76 €
TPKR General		TPKR 1603 PDTR -PW		0.11 ~ 0.20	1.2	● 0300					7.76 €	
		TPKR 2204 PDTR		0.18 ~ 0.35	1.7	● 0061					10.34 €	
		TPKR 2204 PDTR -PW		0.18 ~ 0.35	1.7	● 0301					10.34 €	
TPKN Hard Materials		TPKN 1603 PDTR		0.15 ~ 0.30	1.2	● 0062					7.76 €	
		TPKN 1603 PDTR -PW		0.15 ~ 0.28	1.2	● 0302					7.76 €	
		TPKN 1603 PDTR-GW		0.15 ~ 0.3	1.62	● 0306					7.76 €	
		TPKN 2204 PDTR		0.17 ~ 0.30	1.7	● 0063					10.34 €	
		TPKN 2204 PDTR -PW		0.24 ~ 0.40	1.7	● 0303					9.30 €	
		TPKN 2204 PDTR-GW		0.24 ~ 0.4	2.49	● 0307					12.38 €	
TPUN		TPUN 160308	0.8	0.08 ~ 0.15		● 0064					6.33 €	
		RDKW 0501M0		0.10 ~ 0.20		● 0207	● 0412				5.78 €	
RDKW Hard Materials		RDKW 0702M0		0.12 ~ 0.25		● 0208	● 0439				5.78 €	
		RDKW 0802M0		0.13 ~ 0.25		● 0043	● 0440				6.60 €	
		RDKW 10T3M0		0.16 ~ 0.30		● 0040	● 0441				6.88 €	
		RDKW 1204M0		0.16 ~ 0.35		● 0042	● 0442				7.48 €	
		RDMT 0803M0		0.15 ~ 0.25		● 0225					6.33 €	
RDMT General		RDMT 10T3M0		0.18 ~ 0.28		● 0246					6.88 €	
		RDMT 1204M0		0.2 ~ 0.3		● 0226					7.76 €	
		RDMW 0802M0		0.05 ~ 0.15		● 0227					6.60 €	
RDMW Hard Materials		RDMW 10T3M0		0.1 ~ 0.25		● 0228					6.88 €	
		RDMW 1204M0		0.16 ~ 0.3		● 0229					7.48 €	
		RPMT 08T2M0		0.10 ~ 0.24		● 0038					6.60 €	
RPMT General		RPMT 10T3M0		0.16 ~ 0.30		● 0036					6.88 €	
		RPMT 1204M0		0.20 ~ 0.35		● 0037	● 0401	● 0415	● 0463	● 0462		7.76 €

CONSULTE NUESTRO CATÁLOGO ON-LINE PARA MAS INSERTOS!!!

CONDICIONES DE CORTE



Cutting Speed			Vc (m/min.)											
ISO	VDI	Sub Gr	YG602		YG622		YG713		YG613		YG501		YG5020	
			Min	Max	Min	Max	Min	Max	Min	Max	Min	Max	Min	Max
P	1~5	Non-Alloyed Steel	140	380	140	400	170	300	90	230	-	-	-	-
	6~9	Low-Alloyed Steel	120	300	120	320	180	250	70	210	-	-	-	-
	10~11	High-Alloyed Steel	70	150	70	170	100	140	60	100	-	-	-	-
M	12~13	Ferritic & Martensitic	120	200	-	-	-	-	80	180	-	-	-	-
	14	Austenitic Stainless Steel	130	250	-	-	-	-	100	200	-	-	-	-
K	15~16	Grey Cast Iron	120	250	120	270	-	-	-	-	180	350	200	350
	17~18	Nodular Cast Iron	130	220	130	240	-	-	-	-	120	270	150	300
N	21~30	Non-Ferrous Metals (Al)	-	-	-	-	-	-	-	-	-	-	-	-
S	31~37	Superalloys & Titanium	25	45	-	-	-	-	20	40	-	-	-	-
H	38~41	Hard Materials	40	80	40	100	-	-	-	-	50	90	-	-

Promoción válida hasta el 31 de diciembre de 2021 o fin de existencias